

## CONTROL VALVE OVERHAUL

The control valve can be overhauled to correct external leakage only. If the valve has excessive internal bypass, it will need to be replaced entirely.

Refer to [Figure 15](#) (this page) or [16](#) (page 25).

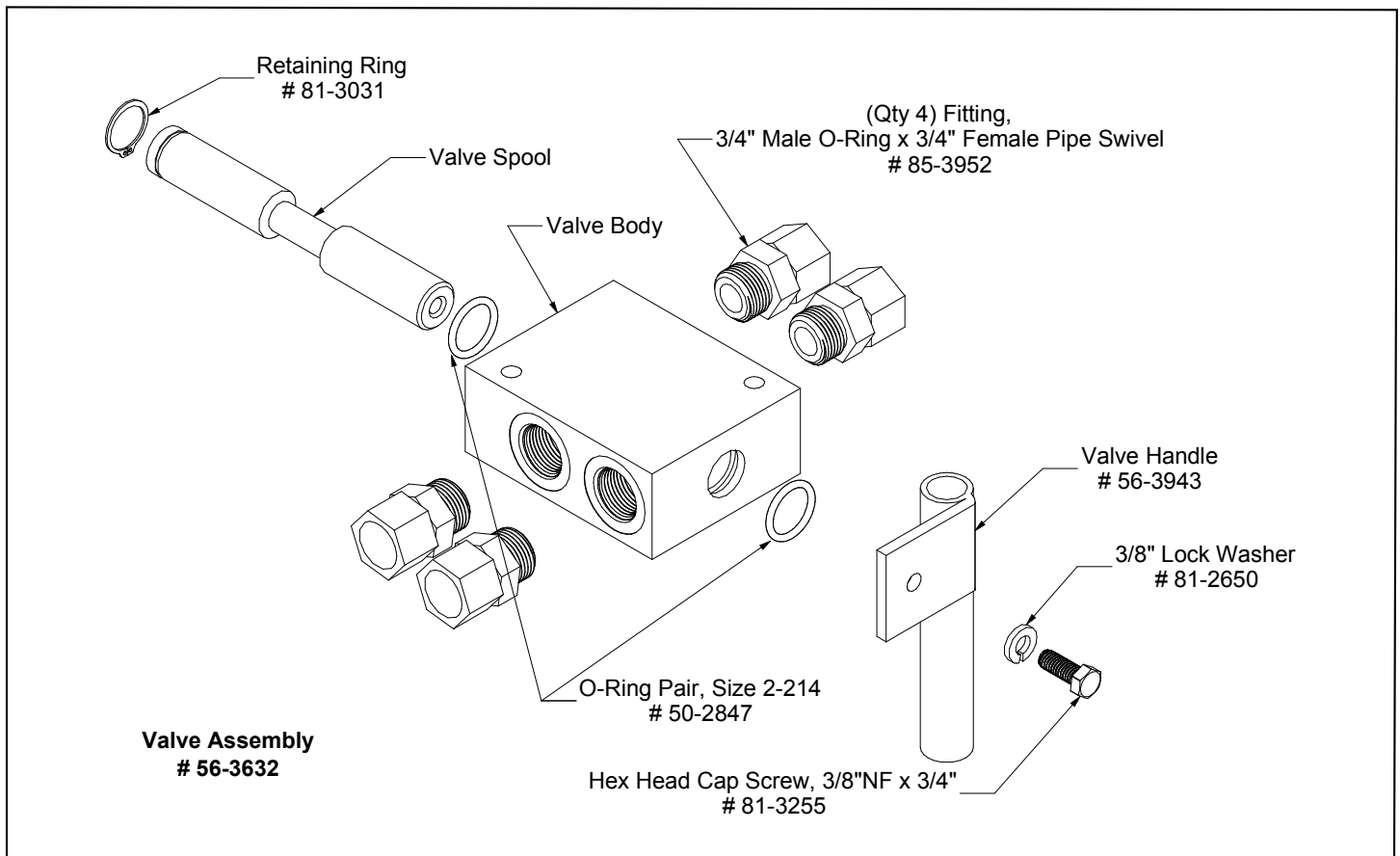
### Disassembling the Control Valve

- Remove the cap screw and lock washer which attach the valve handle to the spool. Note: If the spool turns so that the screw cannot be removed, hold the end of the spool at the opposite end beyond the retaining ring with locking pliers or similar. Do not grip the area which slides in the valve body.
- Remove the spacer collar (one-way only).
- Remove the spool by sliding it toward the retaining ring side. Note that the retaining ring does not have to be removed.
- Remove the two o-rings from the valve body.

### Reassembling the Control Valve

Prior to reassembly inspect all components for wear and damage. Do not reinstall defective components.

- Replace the two o-rings in the valve body with new o-rings. Lubricate the o-rings with hydraulic fluid before installing them.
- Install the retaining ring on the spool, if it was removed.
- Lubricate the spool with hydraulic fluid and insert it into the valve body.
- Attach the valve handle with the cap screw and lock washer.



**-Figure 15-  
Standard Control Valve, Two-Way--Exploded View**