



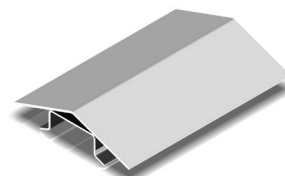
CHOOSING THE RIGHT FLOOR

KEITH® WALKING FLOOR® systems are available in a wide range of profiles and thicknesses to address the vast number of applications that are in use worldwide. A general description of uses, applications, and benefits to each system is below.

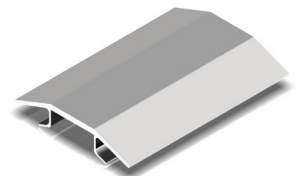
V-9 SERIES

- Heavy abrasion applications (Steel Slat only)
- Full length bearing support
- Full length hold-down
- Leak resistant

- Aluminum V-9 Slat typically used for MSW, recyclables, and light C&D
- Steel V-9 Slat designed for use in heavy C&D, scrap metal, aggregate, and asphalt

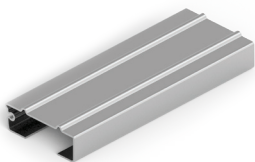


STEEL



ALUMINUM

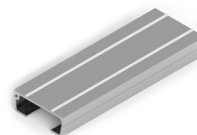
STAINLESS STEEL



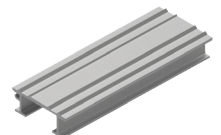
- Ideal for abrasive loads
- Very high wear resistance
- Capable of moving pallets
- Long flooring life

STANDARD ALUMINUM

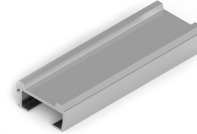
- Original WALKING FLOOR® slat profile
- Wide range of profile types
- Interchangeable slat designs
- Used for shredded paper, MSW, recyclables, biofuels, light to moderate C&D and wood forest products
- Available in thicknesses ranging from 1/8" to 3/4" triple ridge



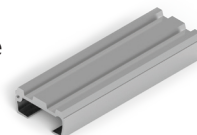
1/8"



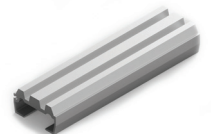
3/16" HORIZONTAL SEAL



1/2" IMPACT



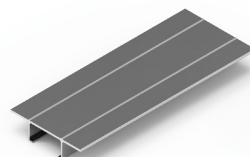
1/2" CWS IMPACT



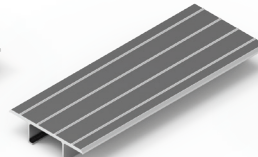
3/4" CWS IMPACT

PRESSURE SEAL® LITE

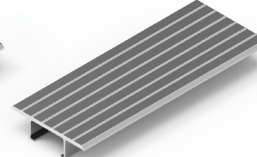
- 21 slat system
- Lighter weight
- Fast install
- Available in aluminium & UHMW
- Excellent cleanout



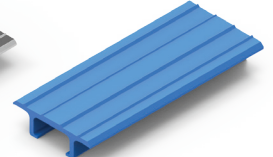
1/8"



3/16"



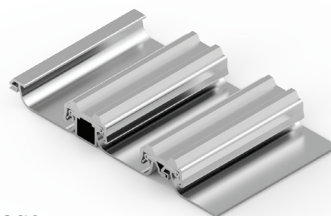
7/32"



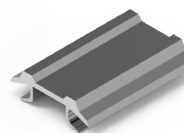
1/4" UHMW

LEAKPROOF

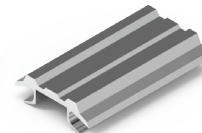
- Designed for high moisture loads
- Can hold 12" of standing water
- Front mount drive
- Full length bearing support
- Used for MSW, medical waste and silage



V-18 SERIES



1/2" Double Ridge



1/2" Triple Ridge

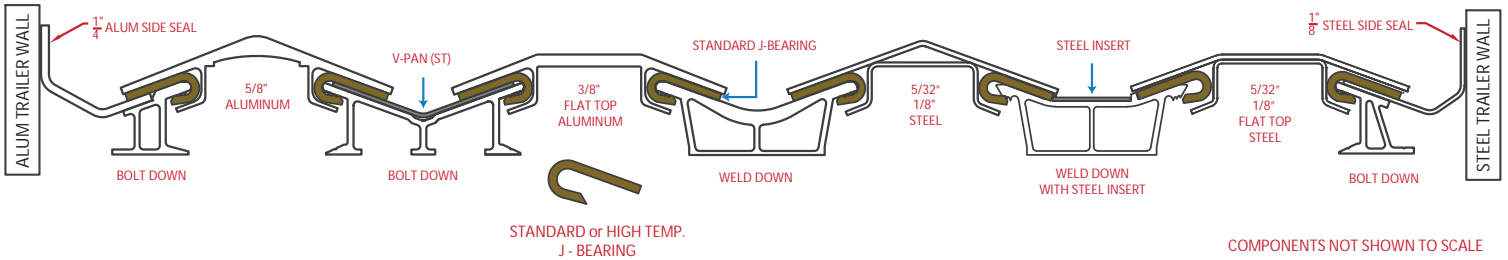
- For MSW
- Leak resistant
- No floor seal

* Check with your trailer manufacturer or local dealer to make sure your trailer is compatible with forklift traffic.

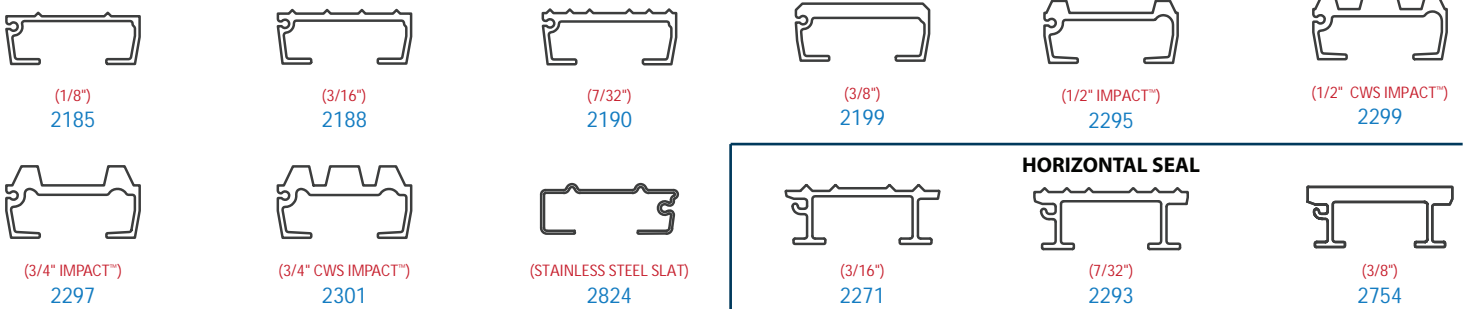
MOBILE APPLICATIONS

COMMON FLOORING AND COMPONENTS

V-9 SERIES



STANDARD 3.5" SLATS



BEARINGS



SEAL



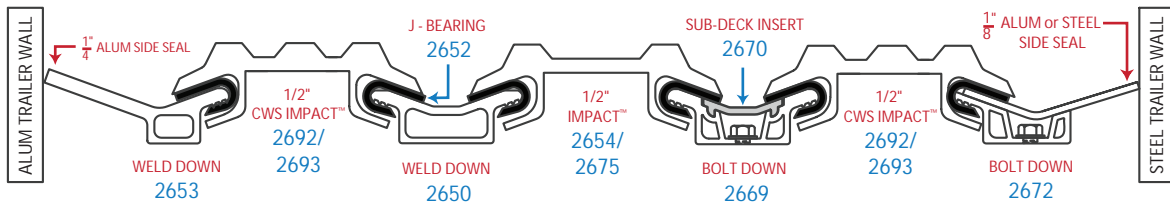
SUBDECK



PRESSURE SEAL® LITE



V-18 SERIES



LEAK PROOF (15 SLAT)



KEITH
MANUFACTURING CO

www.keithwalkingfloor.com

KEITH Manufacturing Co.
WORLD HEADQUARTERS
 (800) 547-6161
 (541) 475-3802
 (541) 475-2169 fax
sales@keithwalkingfloor.com